

44/75

75

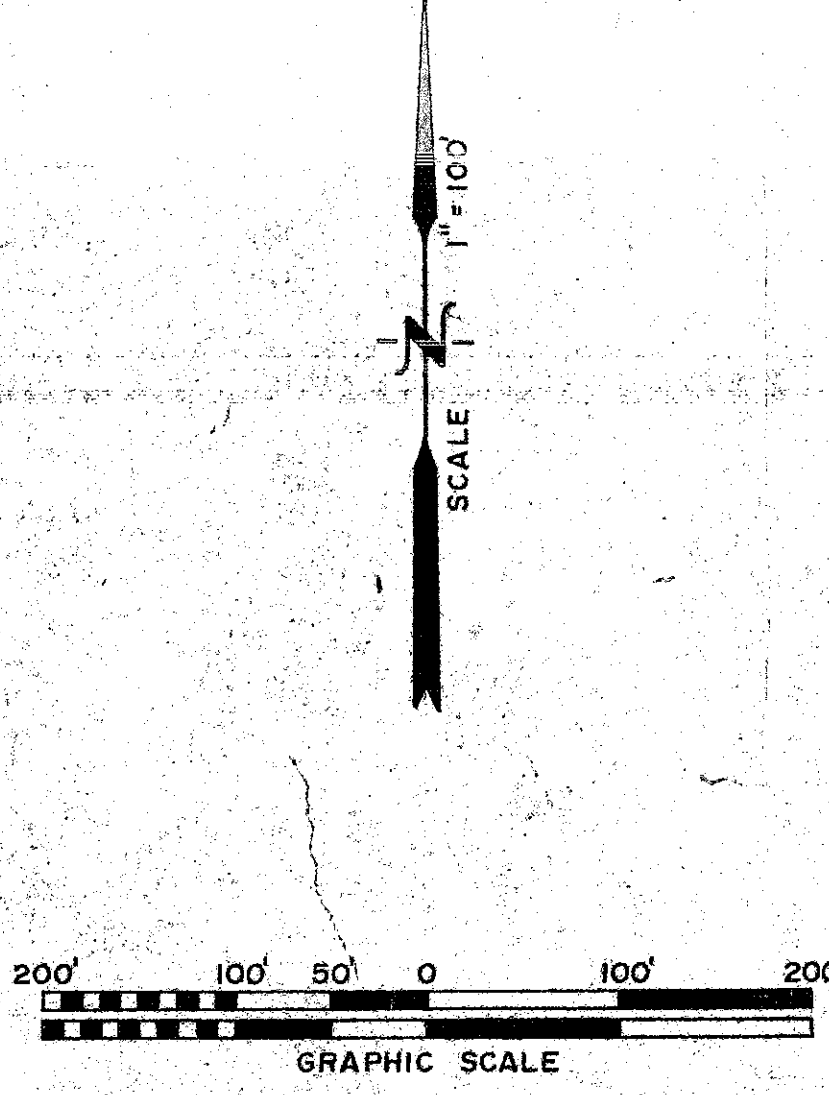
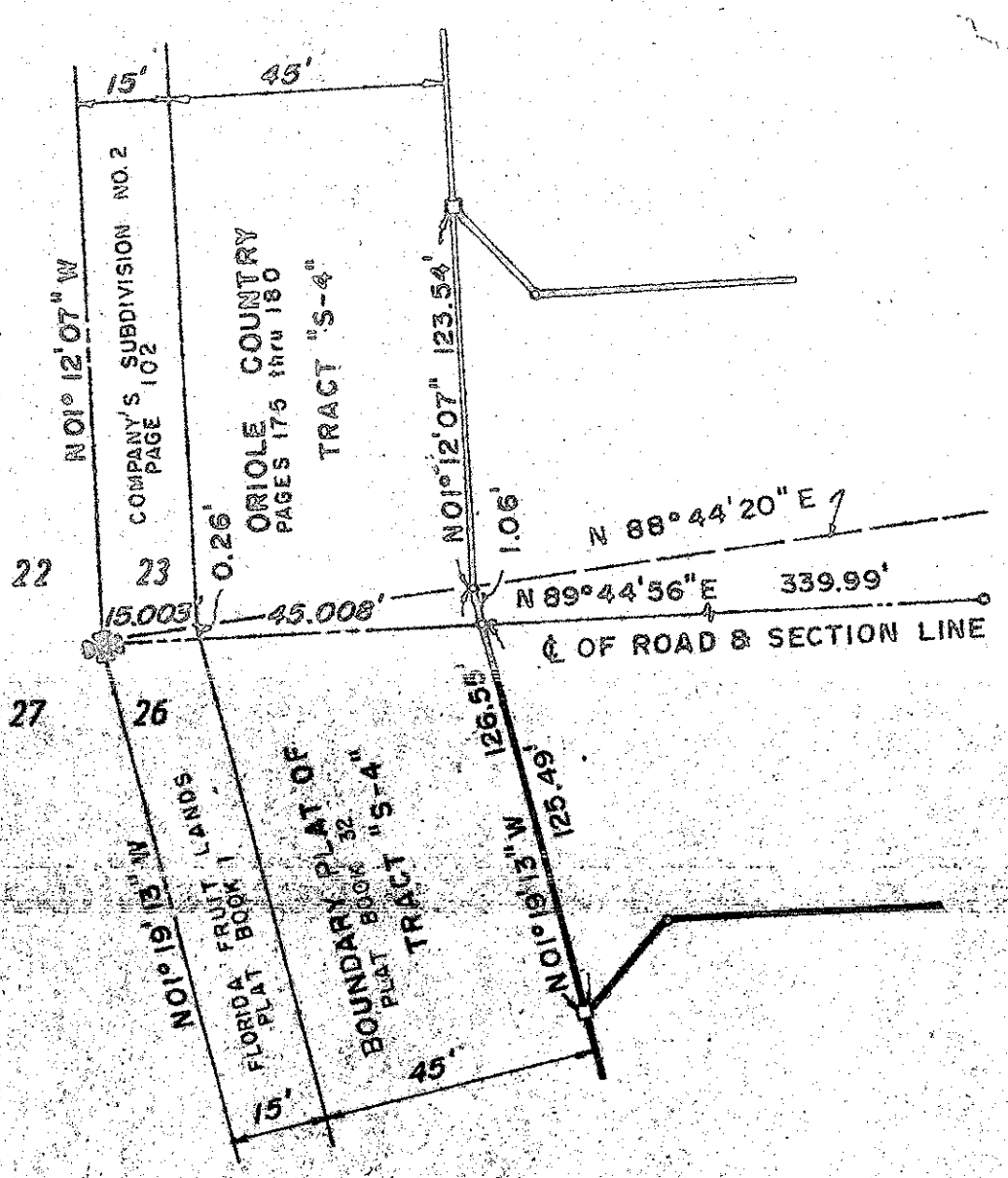
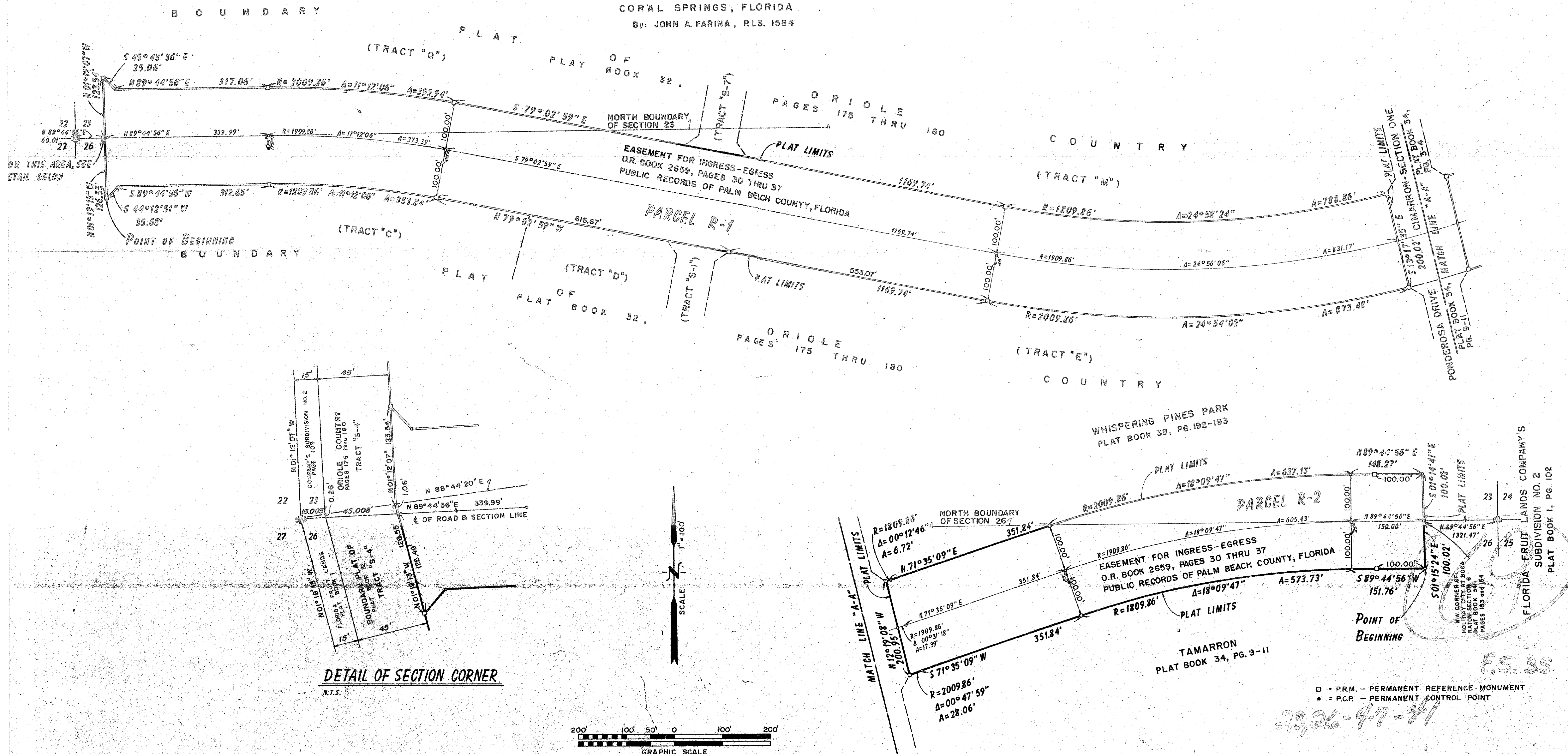
PALMETTO PARK ROAD

A Part of a P.U.D.

BEING A REPLAT OF A PORTION OF TRACT "S-5", BOUNDARY PLAT OF ORIOLE COUNTRY, AS RECORDED IN PLAT BOOK 32, PAGES 175 THRU 180 INCLUSIVE, PUBLIC RECORDS OF PALM BEACH COUNTY, FLORIDA. SECTIONS 23 & 26, TOWNSHIP 47 SOUTH, RANGE 41 EAST

SHEET 2 of 2 SHEETS

PREPARED BY
BROOME AND FARINA, INC.
ENGINEERS - PLANNERS - SURVEYORS
CORAL SPRINGS, FLORIDA
By: JOHN A. FARINA, P.L.S. 1564



□ = P.R.M. - PERMANENT REFERENCE MONUMENT
• = P.C.P. - PERMANENT CONTROL POINT

33,26-47-71
Palmetto Park Road 44/75 P.N. 9737